

# NEWSLETTER

Issue 2 – 12th September 2025

## Message from Mrs. Holland

It has been a very long week here in school and there are a lot of tired faces this morning! I am sure we will all be back into routines soon as we settle into the Autumn term. The Autumn term is always a busy one, especially as we head towards Christmas. As you will see from the 'Looking Further Ahead' page of this newsletter, there is a lot going on in school so please do make a note of the dates. We have managed to secure seats at a Pantomime in New Brighton this year which will be a fabulous experience so please keep a look out for a letter soon requesting payment. Thank you to all those who came to the meet the teacher evenings. Don't forget to sign the Home School agreement and send it back to your class teacher. Have a lovely weekend. Mrs Holland



## House Team Winner of this Week



## Reminders

Week commencing  
15th September

Lunch Menu: Week 3

Nursery starts at 8:55 am  
School starts at 8:45 am  
Gates close at 9:00 am

## St Theresa's Church News.



Mass times:  
Friday 10 am.  
Saturday 5 pm  
Sunday 9:30 am

## Spotlight on... Responsibilities!



Congratulations to our newly appointed House Captains, Vice Captains, Councillors and Junior Safety Officers. We are very proud of you all.

## Birthdays

6<sup>th</sup> - 12<sup>th</sup> September



Pipe - 7  
Clovis - 7  
Cali - 6  
Connor - 9  
Elyse - 10

Miss Johnson - 21

## Attendance

6<sup>th</sup> - 12<sup>th</sup> September

Nursery 97%  
Reception 91%  
Year 1 96%  
Year 2 96%  
Year 3 97%  
Year 4 83%  
Year 5 96%  
Year 6 99%  
Whole School: 94%



## Awards

Class	Gospel Value	General Award
Reception	Jamie – Junior	Oskaras
Year 1	Tami	Kennedy
Year 2	Parker-John	Lottie-Mai
Year 3	Ebony	All of Year 3
Year 4	Connor	Gracie-Mae
Year 5	Maja	Elsie
Year 6	Athen	Jacob

## Gospel Quote

For God did not send his Son into the world to be its judge, but to be its saviour.

John 3:17

Tel: 01244-470860 [www.st-theresas.cheshire.sch.uk](http://www.st-theresas.cheshire.sch.uk)

Twitter: @sttheresasCP FB: St Theresas Catholic Primary School Instagram: St Theresas RC School

Website Calendar link: <https://www.st-theresas.cheshire.sch.uk/events>

If you have any suggestions that you would like to see in our newsletter, please email: [admin@st-theresas.cheshire.sch.uk](mailto:admin@st-theresas.cheshire.sch.uk)

## Looking Further Ahead...

Wednesday 1 <sup>st</sup> October	Whole School Mass to celebrate St. Theresa's Feast Day	To be confirmed
Tuesday 21 <sup>st</sup> October and Wednesday 22 <sup>nd</sup> October	Parents Evening	Details to be sent nearer the time
Wednesday 22 <sup>nd</sup> October	Harvest Festival	We will be asking for donations nearer the time
Friday 24 <sup>th</sup> October	Non-uniform day	Children are kindly asked to bring in a gift for our Christmas Fair wrapping room.
Friday 24 <sup>th</sup> October	Finish for half term	
Monday 3 <sup>rd</sup> November	School reopens	
Thursday 6 <sup>th</sup> November	Film night 4 - 5.30pm	More details nearer the time
Friday 14 <sup>th</sup> November	Non-uniform day	Children are kindly asked to bring in bottles or chocolate for our tombolas
Friday 28 <sup>th</sup> November	St. Theresa's Christmas Fair 3.30 - 5pm	All help very welcome!
Monday 1 <sup>st</sup> December	Whole school Advent Mass 9.30am	To be confirmed

## Looking Further Ahead...

Tuesday 9 <sup>th</sup> December	Nursery Nativity 9.15	All Nursery parents are very welcome
Tuesday 9 <sup>th</sup> December	Key Stage 2 Carol Service 6pm at church	All Key Stage 2 children will be expected to attend
Wednesday 10 <sup>th</sup> December	Pantomime trip	Further details nearer the time
Thursday 11 <sup>th</sup> December	Reception and KeyStage 1 Nativity 9.30 and 2.15	Further details nearer the time
Friday 12 <sup>th</sup> December	Santa Dash	Look out for the sponsor forms nearer the time
Tuesday 16 <sup>th</sup> December	Christmas parties	Children can wear party clothes to school
Wednesday 17 <sup>th</sup> December	Christmas dinner day	Children can wear Christmas jumpers to school
Thursday 18 <sup>th</sup> December	Whole school Mass 1.30pm	To be confirmed
Thursday 18 <sup>th</sup> December	School closes for Christmas	
Friday 19 <sup>th</sup> December	Inset day	

# WHAT'S ON THE MENU TODAY?

## WEEK 3

MEAT FREE  
MONDAY

TUESDAY

WEDNESDAY

SUGAR FREE  
THURSDAY

MEAT FREE  
FRIDAY

AVAILABLE DAILY

CHOICE 1



Tomato Tortilla Stack (V)  
served with Potato Wedges &  
Seasonal Vegetables



Sausages served with  
Mashed Potato, Gravy  
& Seasonal Vegetables



Roast Chicken Lunch served  
with Roast/Mashed Potatoes,  
Seasonal Vegetables & Gravy



Pasta Bolognese served  
with Crusty Bread &  
Seasonal Vegetables



Cod/Salmon Fish Fingers  
served with Chips,  
Baked Beans or Peas

VEGETARIAN  
OPTION OF  
CHOICE 1

CHOICE 2



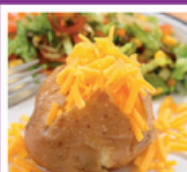
Deli Choice of Breads  
with a Selection of Fillings  
served with a Side Salad



Jacket Potato with a  
Selection of Fillings  
served with a Side Salad



Deli Choice of Breads  
with a Selection of Fillings  
served with a Side Salad



Jacket Potato with a  
Selection of Fillings  
served with a Side Salad



Deli Choice of Breads  
with a Selection of Fillings  
served with a Side Salad

FRESHLY MADE  
SALAD

FRESH BREAD

FRUIT YOGHURT

FRESH FRUIT

CHILLED WATER

PUDDING



Toffee Cake



Fruit Jelly



Chocolate Crispy Cake



Cheese & Crackers



Nobbie Biscuit

## EVERY MINUTE COUNTS

LATENESS = LOST LEARNING (Figures below are calculated over a school year)	
5 minutes late each day	3 days lost!
10 minutes late each day	6.5 days lost!
15 minutes late each day	10 days lost!
20 minutes late each day	13 days lost!
30 minutes late each day	19 days lost!

Children are expected to attend school regularly, unless there is good reason for absence.

The school has a duty to safeguard all its pupils. If a child is absent, the parents/carers should inform the school on the first day of absence and each following day of absence, stating the reason.

Parents/carers should ring the school office as early as possible on 01244 470860 to inform us of the reason for their child's absence. Alternatively Parents/carers can email [school.admin@st-theresas.cheshire.sch.uk](mailto:school.admin@st-theresas.cheshire.sch.uk)

For additional support, Parents/carers can contact the attendance Lead, Learning Mentor or Head Teacher.

The Head Teacher is the senior leader responsible for the strategic approach to attendance in school.

The school office will make contact with home when a child is absent, and the parent/carer has not notified the school of the absence. If no contact can be achieved or the reason for absence is not accepted the absence will be unauthorised.